

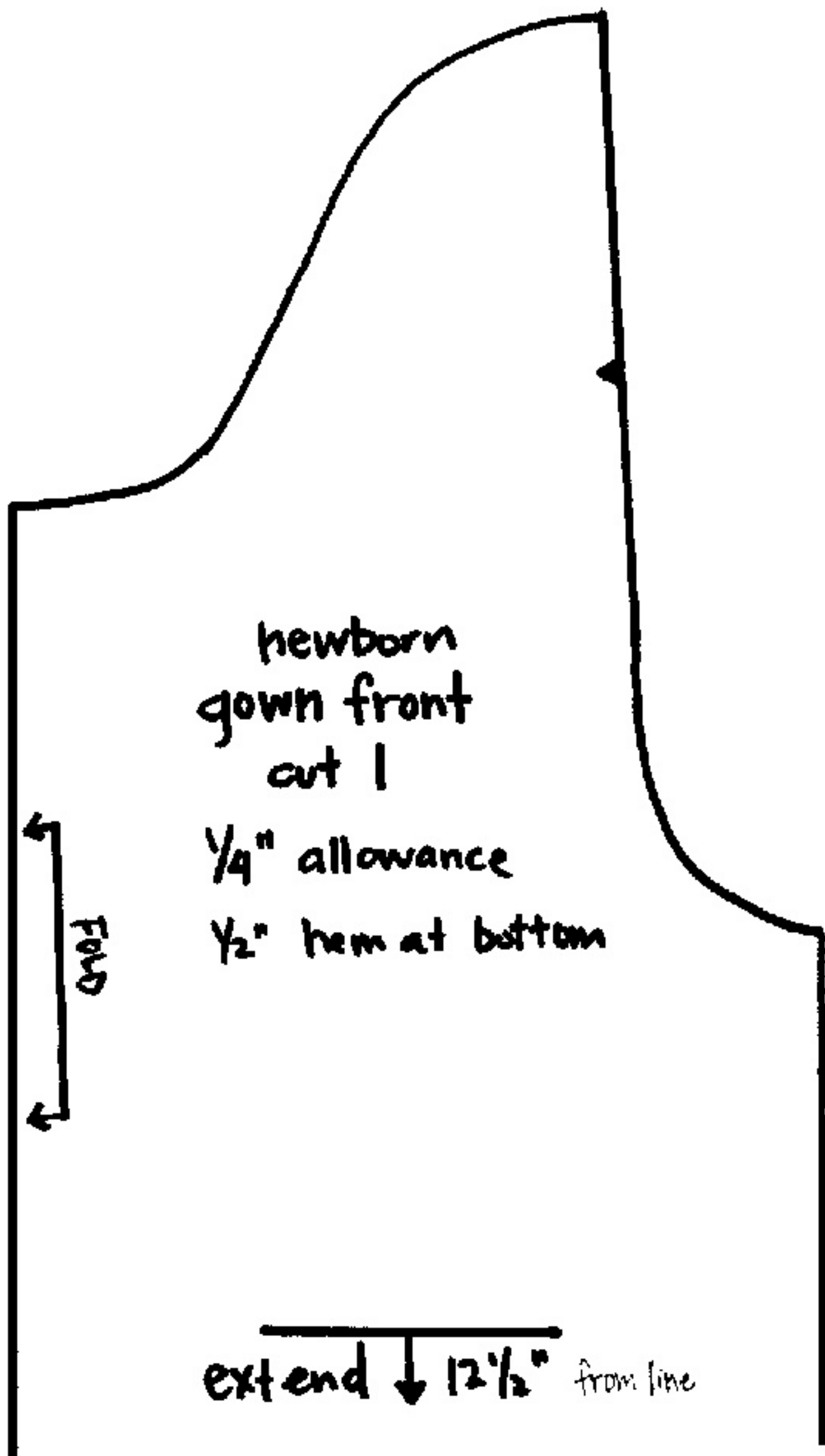
newborn
gown back
cut 1

$\frac{1}{4}$ " allowance

$\frac{1}{2}$ " hem at
bottom

FOLD

extend \downarrow $12\frac{1}{2}$ " from line



newborn
gown front
cut 1

$\frac{1}{4}$ " allowance

$\frac{1}{2}$ " hem at bottom

FOLD

extend \downarrow $12\frac{1}{2}$ " from line

join here with top half

newborn gown
sleeve

(lower half)

cut 2

$\frac{1}{2}$ " hem

$\frac{1}{4}$ " allowance

newborn gown
sleeve
(upper half)

1/4" allowance

Join here with lower half

