

Connect to A

Pg 2 of 8

"Slim Slack"
part front
piece B
2T



Connect to C

Connect to B

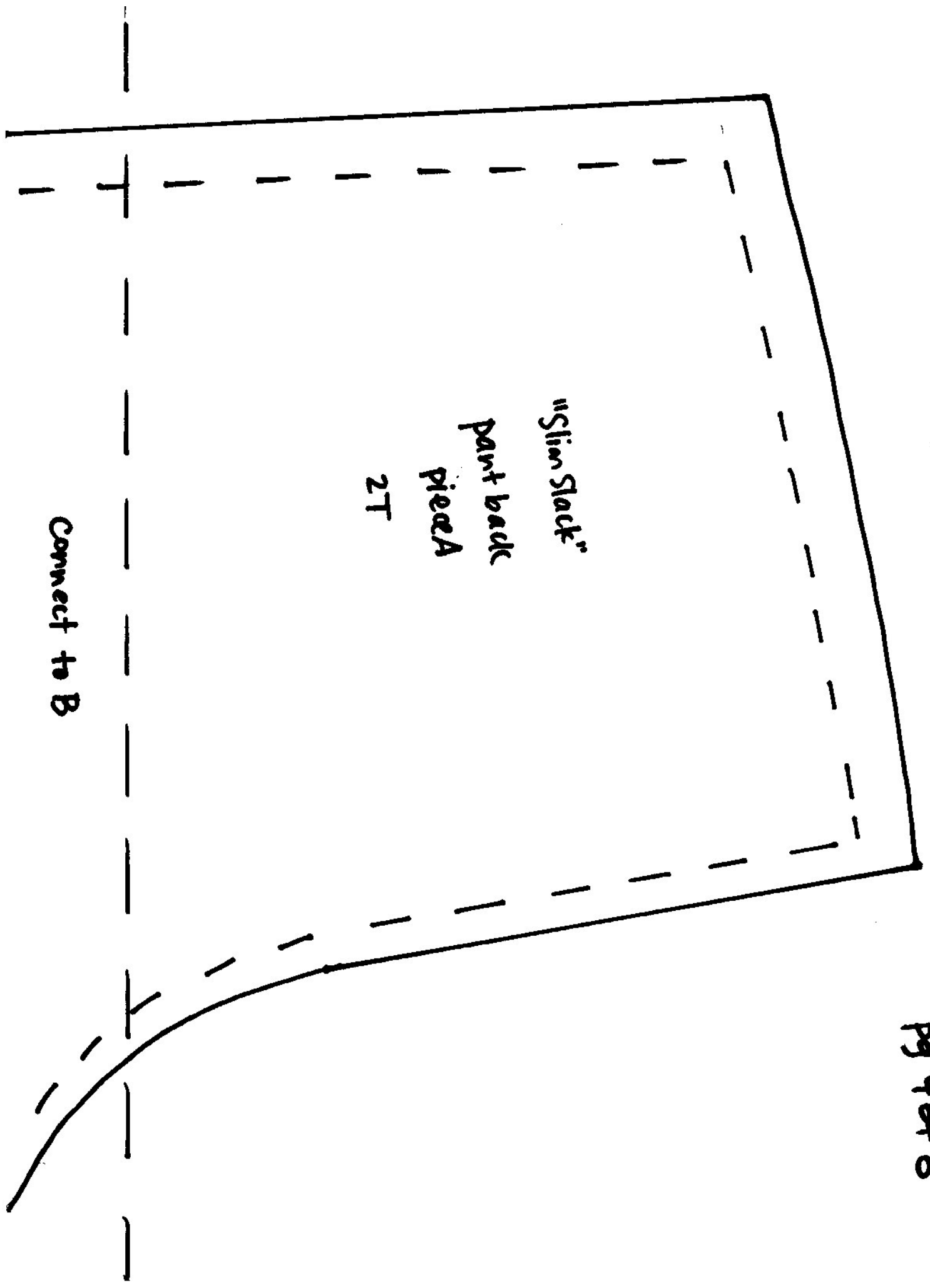
lengthen or shorten here

"Slim Slack"

part front
piece C

2T

HEM

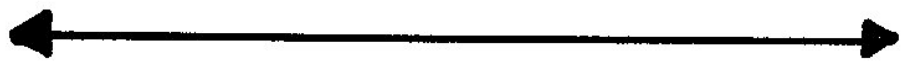


Connect to A

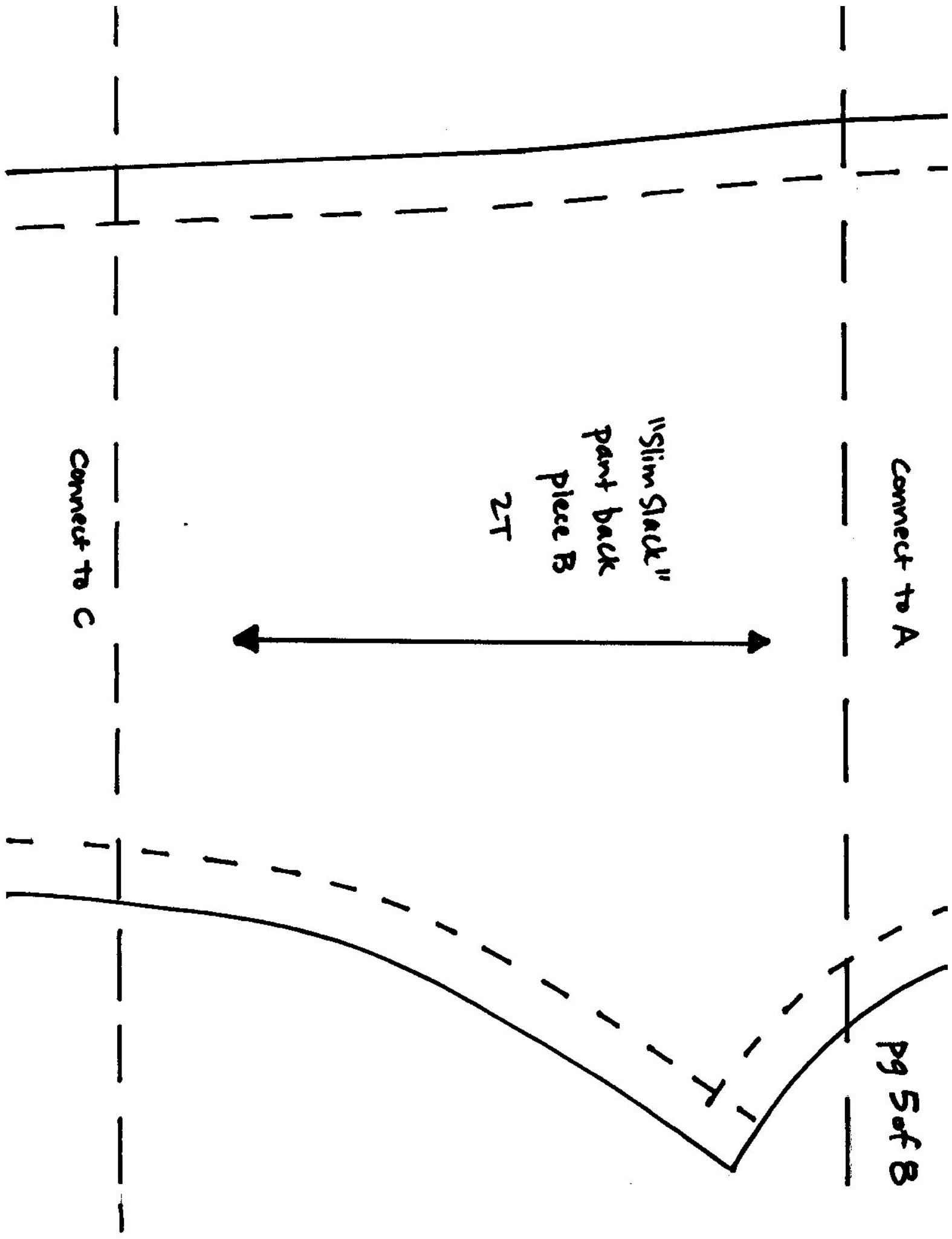
Pg 5 of 8

"Slim Slack"
part back
piece B

2T



Connect to C

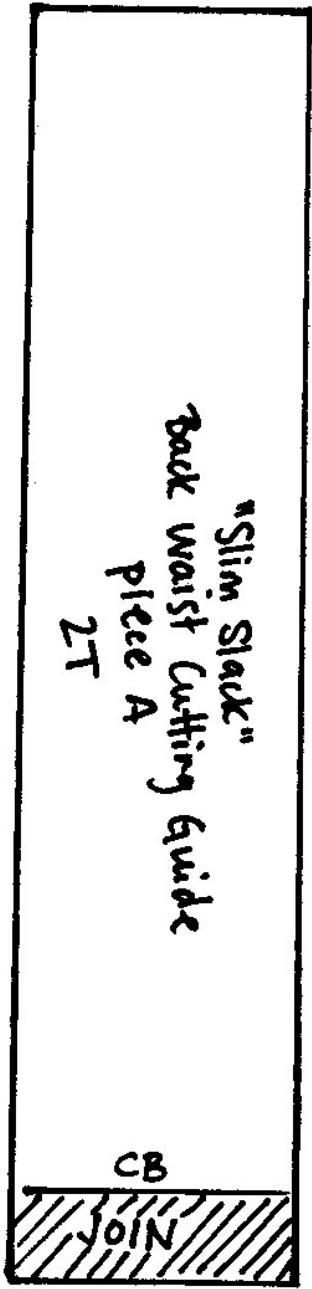
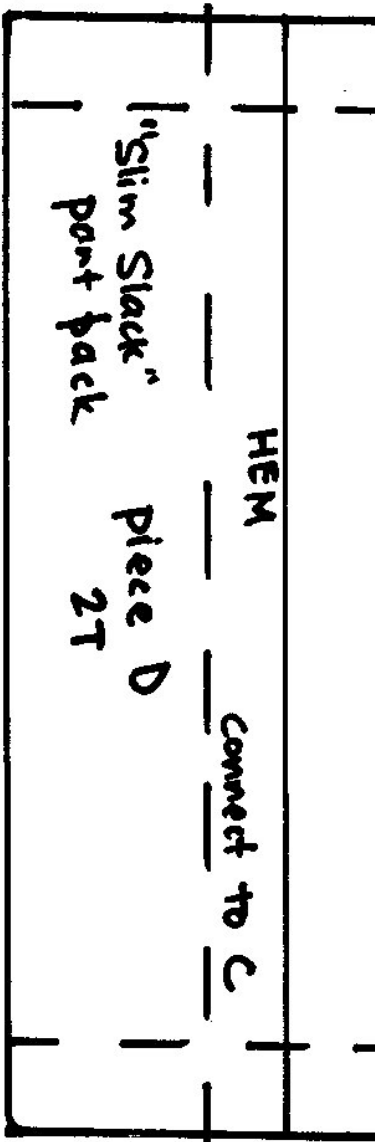


Connect to B

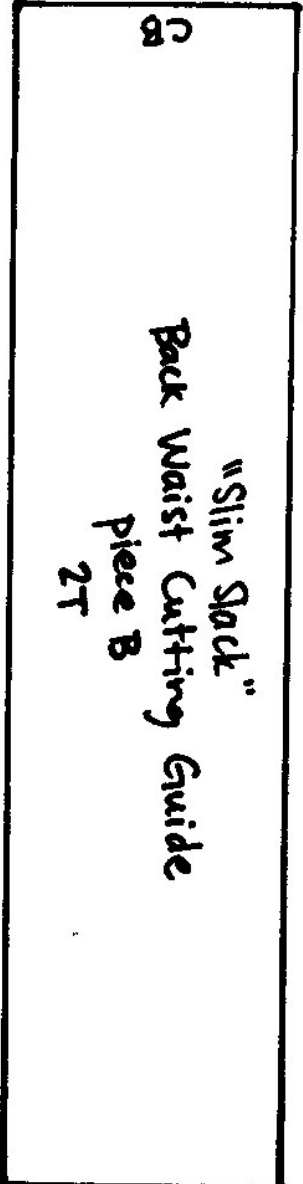
"Slim Slack"
part back
piece C
2T

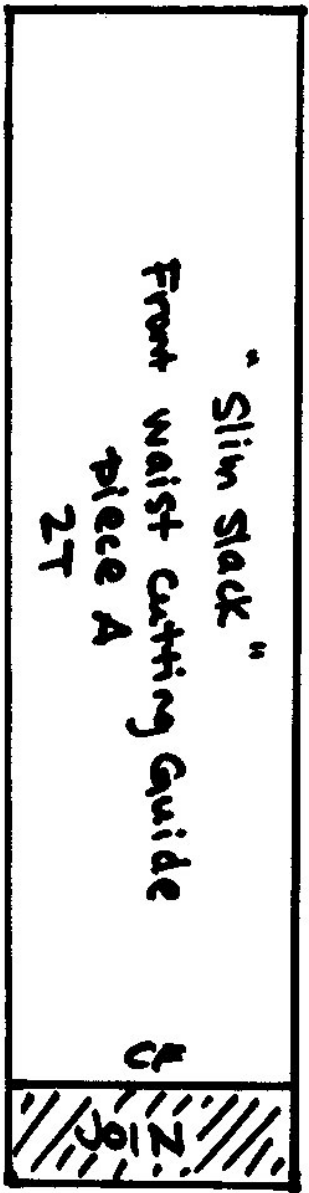
pg 6 of 8

Connect to D



Join Back
waist cutting
guide at
center back (CB)





Join Front
waist cutting
guide at
center front (CF)

